

PACAYA-SAMIRIA

NATIONAL RESERVE



TOURISTIC MAP



NATIONAL RESERVE
PACAYA-SAMIRIA

Loreto

Lima



Location

Lima-Iquitos (1.4 h, air); Iquitos - Nauta (2h, terrestrial); Nauta-Pacaya Samiria (1-4-8h, slider)

Average height

210 msnm

Temperature

24° average

Activities



Known as The Forest of Mirrors, for the intensity with which the forest is reflected in its black waters, the Pacaya Samiria National Reserve, protects in its vast territory, one of the most amazing ecosystems on the planet: the Amazon floodplain forest. An aquatic world created by an intricate system of rivers and lagoons, where creatures thrive with the pink dolphin and black caiman, the taricayas and huge flocks of cormorants. Located near the city of Iquitos, Pacaya Samiria constitutes the heart of the Peruvian jungle.

YOU CAN NOT LOSE THIS!

Cochas El Dorado and Yarina

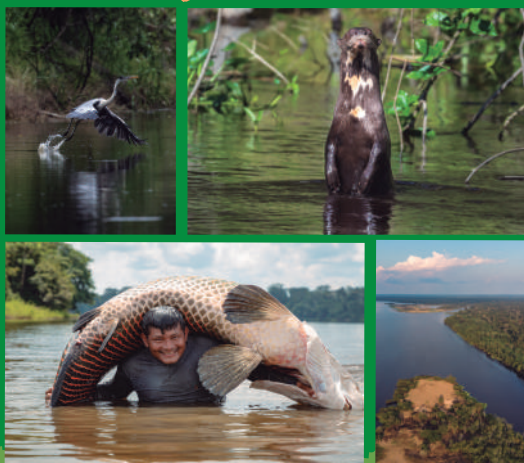
Located in the basin of the Yanayacu and Samiria rivers, they are two of the most beautiful places in the Amazon, ideal for observing wildlife and embarking on an unforgettable adventure in the floodplain forest.

Wildlife observation

Pacaya-Samiria is located in one of the most biodiverse regions on the planet. More than a thousand species of vertebrates have been recorded in its forests and rivers.

Native Communities

The tourist use areas are associated with various native communities of the Kukama ethnic group, do not miss the opportunity to learn about their ancestral customs.



Reserva Nacional Pacaya Samiria-Sernanp

rnpacayasamiria

rnpacayasamiria

Reserva Nacional Pacaya Samiria

OFFICE ANP

Tacna N° 432 - Iquitos

T: 971970569/ 961605199

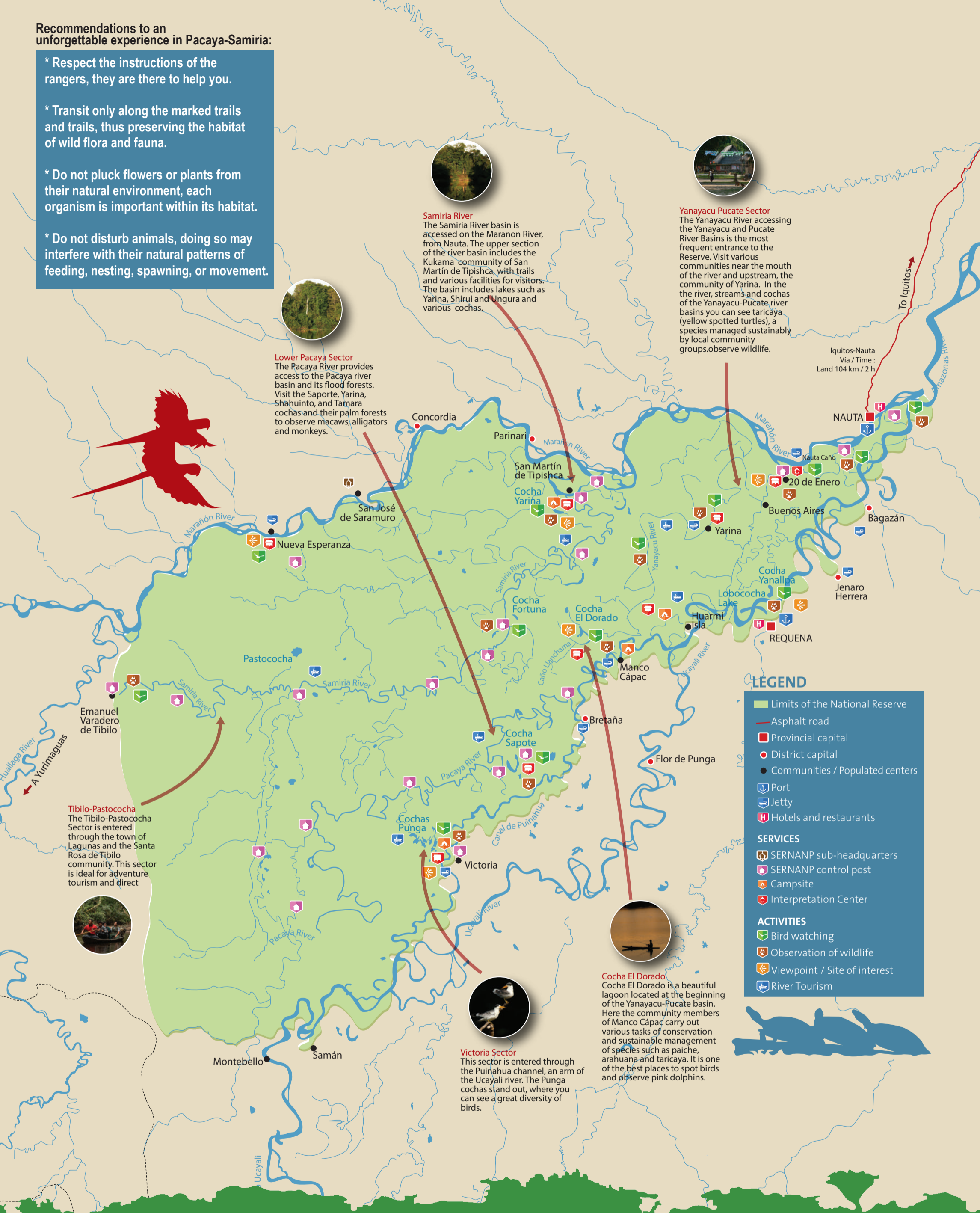
rnpacayasamiria@sernanp.gob.pe

www.turisonaturaleza.pe



Recommendations to an unforgettable experience in Pacaya-Samiria:

- * Respect the instructions of the rangers, they are there to help you.
- * Transit only along the marked trails and trails, thus preserving the habitat of wild flora and fauna.
- * Do not pluck flowers or plants from their natural environment, each organism is important within its habitat.
- * Do not disturb animals, doing so may interfere with their natural patterns of feeding, nesting, spawning, or movement.



Samiria River
The Samiria River basin is accessed on the Marañón River, from Nauta. The upper section of the river basin includes the Kukama community of San Martín de Tipishca, with trails and various facilities for visitors. The basin includes lakes such as Yarina, Shirui and Ungura and various cochas.

Lower Pacaya Sector
The Pacaya River provides access to the Pacaya river basin and its flood forests. Visit the Sapote, Yarina, Shahuinto, and Tamara cochas and their palm forests to observe macaws, alligators and monkeys.

Yanayacu Pucate Sector
The Yanayacu River accessing the Yanayacu and Pucate River Basins is the most frequent entrance to the Reserve. Visit various communities near the mouth of the river and upstream, the community of Yarina. In the the river, streams and cochas of the Yanayacu-Pucate river basins you can see taricaya (yellow spotted turtles), a species managed sustainably by local community groups. observe wildlife.



Tibilo-Pastococha
The Tibilo-Pastococha Sector is entered through the town of Lagunas and the Santa Rosa de Tibilo community. This sector is ideal for adventure tourism and direct

Victoria Sector
This sector is entered through the Puiñahua channel, an arm of the Ucayali river. The Punga cochas stand out, where you can see a great diversity of birds.

Cocha El Dorado
Cocha El Dorado is a beautiful lagoon located at the beginning of the Yanayacu-Pucate basin. Here the community members of Manco Cápac carry out various tasks of conservation and sustainable management of species such as paiche, arahuana and taricaya. It is one of the best places to spot birds and observe pink dolphins.

LEGEND

- Limits of the National Reserve
- Asphalt road
- Provincial capital
- District capital
- Communities / Populated centers
- Port
- Jetty
- Hotels and restaurants
- SERVICES**
- SERNANP sub-headquarters
- SERNANP control post
- Campsite
- Interpretation Center
- ACTIVITIES**
- Bird watching
- Observation of wildlife
- Viewpoint / Site of interest
- River Tourism

NATIONAL RESERVE

PACAYA-SAMIRIA

